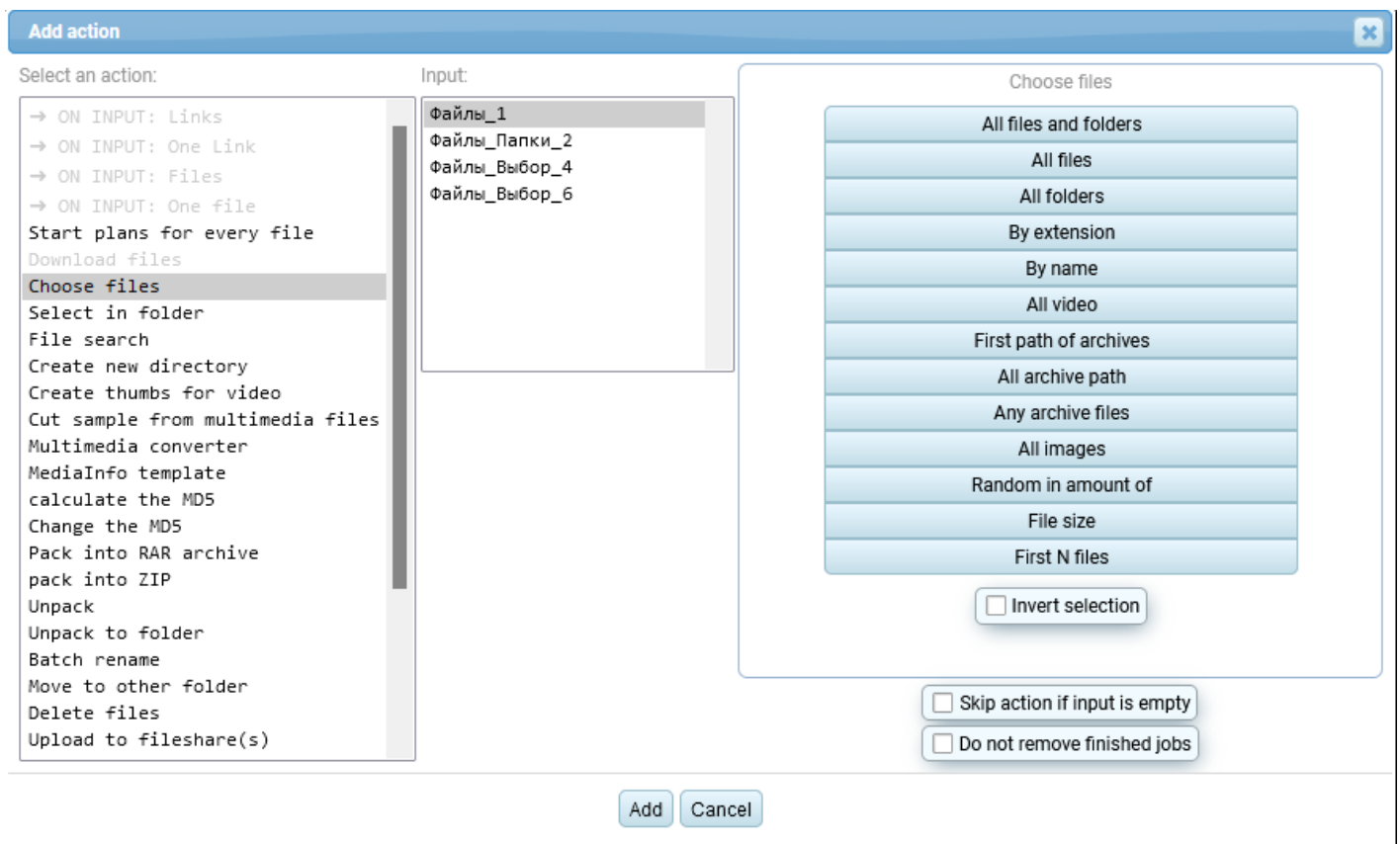


# Select files

This action allows you to filter (select) from the input file list those files that meet the necessary conditions.

- All files and folders - all files submitted to the input is output as a result (makes no sense).
- All files - selects only files, ignores folders
- All folders - selects only folders, ignores files (the output variables will have the subtype 'folder').
- By extension - selects only those files that have the same extension that can be specified.
- By name - selects only those files and folders whose name contains the required text string that can be specified.
- All video - selects all video files
- First parts of archives - selects the first volumes of multivolume archives
- All archive parts - selects all parts of multi-volume archives
- Any archive files - selects all files belonging to archives
- All images - selects all images
- Random in quantity - selects random files or folders from the input, the quantity can be specified.
- File size - allows you to specify an expression, if it is met, the selection will be made (see below).
- First N files - selects the first N files from the list of files or folders passed to the action, the number can be specified.



## Applying the 'File Size' filter

For this filter, you can write an expression with conditions regarding the file size, to select files according to their sizes.

The following variables can be used in the expression, which will be replaced by the corresponding numeric values

```
[file_sum] - the sum of all files passed to the action input
[file_max] - size of the largest file of all files passed to the action input
[file_min] - size of the smallest file of all files passed to the action input

[kB] - will be replaced by *1000 (converts kilobytes to bytes)
[KiB] - will be replaced by *1024 (converts kibibytes to bytes)
[MB] - will be replaced by *1000000 (converts megabytes to bytes)
[MiB] - will be replaced by *1048576 (converts mebibytes to bytes)
[GB] - will be replaced by *1000000000 (converts gigabytes to bytes)
[GiB] - to be replaced by *1073741824 (converts gigabytes to bytes)
[TB] - to be replaced by *1000000000000 (converts terabytes to bytes)
[TiB] - will be replaced by *1099511627776 (converts terabytes to bytes)
```

Since the expression is applied each time for only one file from the list, the variables [file\_sum], [file\_max], [file\_min] will be the same and always equal to the size of the file being checked.

For example, the expression

```
[ file_sum] > 1[ GB]
```

Means: Select all files that are larger than 1 Gigabyte.

---

Revision #2

Created Fri, Feb 7, 2025 11:37 AM by [Admin](#)

Updated Fri, Feb 7, 2025 11:40 AM by [Admin](#)